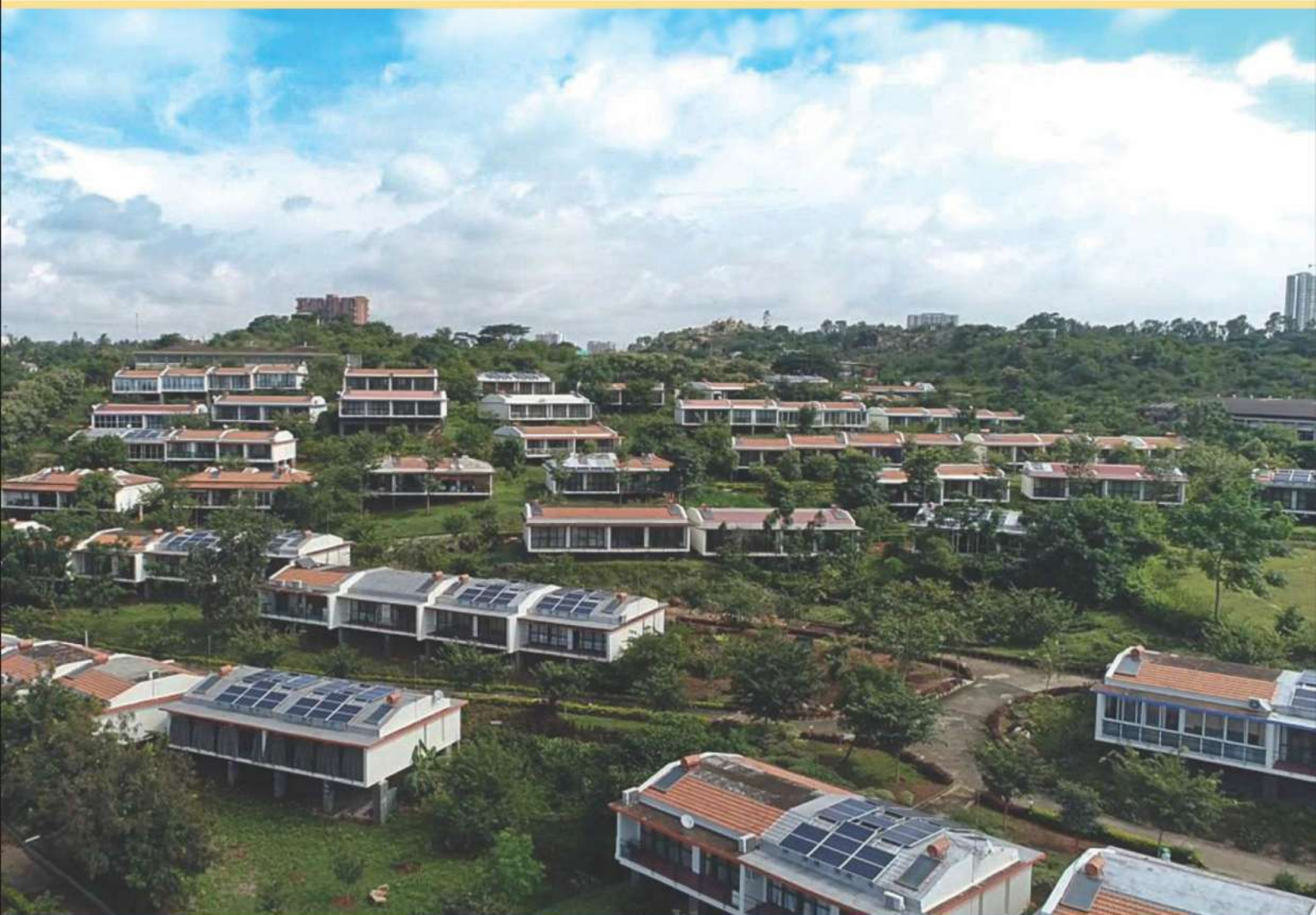


RESIDENTIAL GRID-TIE SOLAR SYSTEM

LET THE SUNSHINE BRIGHTEN UP YOUR LIVES



Trusted, dependable and long-lasting systems



Hassle free quick
installation



Rapid life cycle
service support



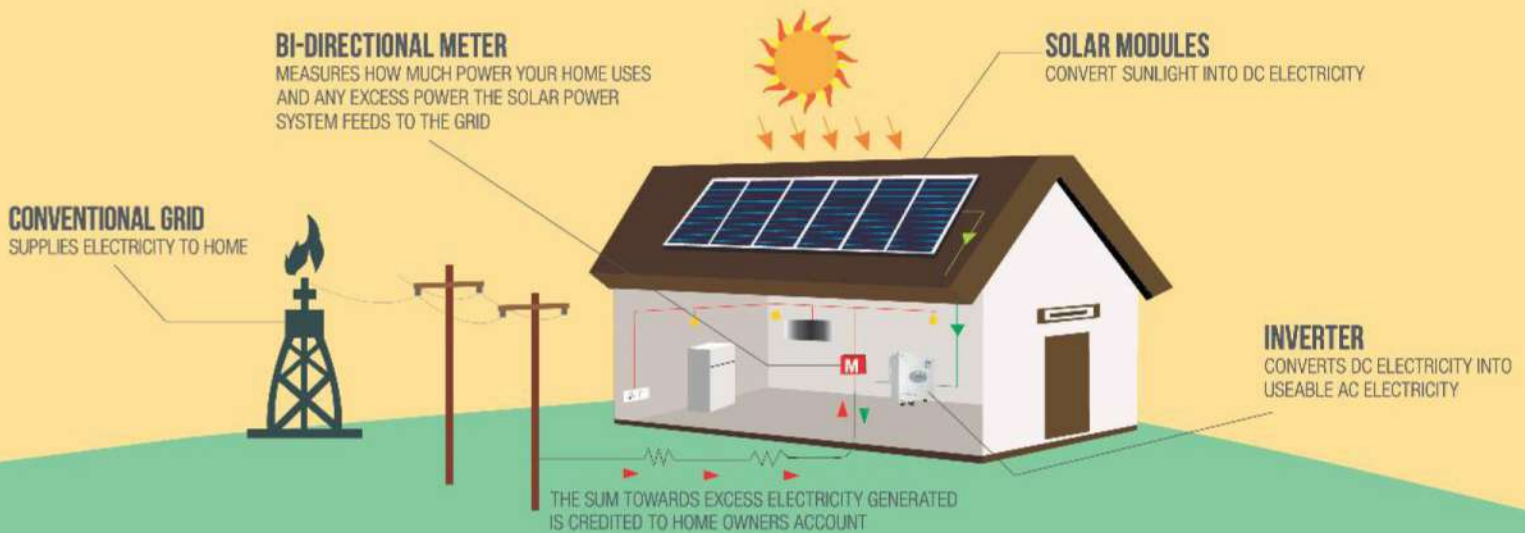
Green power,
clean power



Maintenance free
system



HOW SOLAR GRID-TIE SYSTEM WORKS?



Features

- High efficiency Maximum Power Point Tracking (MPPT) based inverter for maximum output
- Remote monitoring communication interface available (optional)
- Digital display for easy readability
- Active fault monitoring unit for safe operations

Benefits

- Cut down on your electricity bills
- Utilize idle rooftop space
- Sell excess power back to grid
- Hedge against ever increasing electricity tariffs
- Trusted, dependable and long lasting system
- Green energy, clean energy

Components

- Solar array ranging from 1000 to 10,000 Wp
- Safe and secure inverter ranging from 1 kVA to 10 kVA
- Hot dip galvanized mounting structure
- Customized solutions available

Five Powerful Reasons to Choose **TATA POWER SOLARROOF**



AUTHORISED CHANNEL PARTNER
UNISCAN POWER SYSTEMS
9396974949, 9392574949
www.uniscan.in